

KODAK DIGITAL GEM Airbrush Professional Plug-In 2.1

Installing the KODAK DIGITAL GEM Airbrush Professional Plug-In

If you have not downloaded and installed KODAK DIGITAL GEM Airbrush Professional Plug-In, go to <http://www.asf.com/download/>

Download the installer (or install from Kodak Plug-In CD) to your operating system. (Mac or Windows)
Close all image editing programs before installing the software.

Run the KODAK DIGITAL GEM Airbrush Professional Plug-In installer. This will install a trial version of our Plug-Ins so they are available in a Photoshop Plug-In compatible editor.

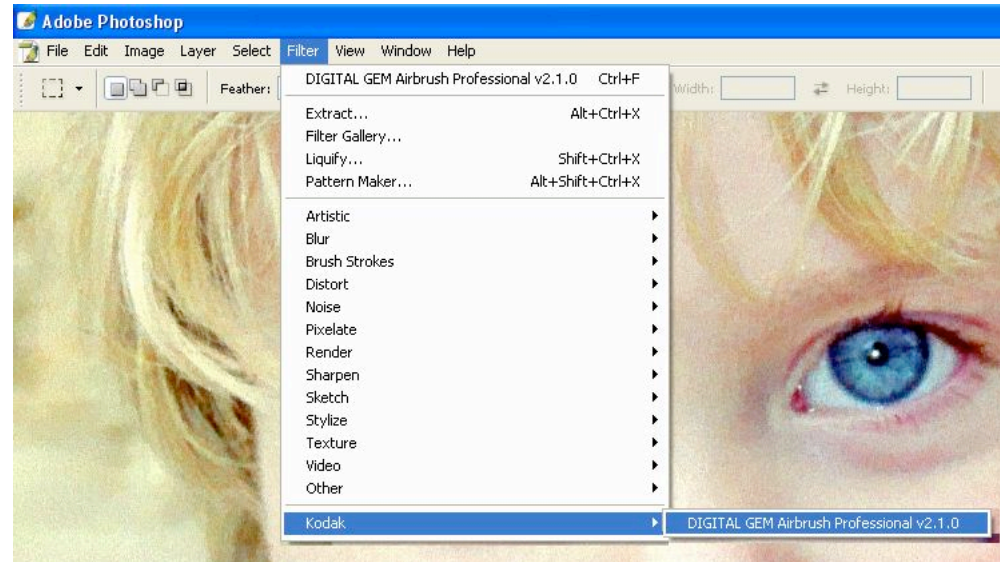
The trial version places a watermark on your images after you have run the Plug-In. Once you register the trial version watermark is removed and no longer is placed on your images. It is important that you do not save over the original with a watermarked image. The watermark cannot be removed from a saved image.

First open an image to edit. In order for the KODAK DIGITAL GEM Airbrush Professional Plug-In to work, the image must be at least 350 by 350 pixels. If your image is smaller than this you can change the image size to the minimum. If you need a smaller image resize the image to your requirements after you use the Plug-In.

Starting KODAK DIGITAL GEM Airbrush Professional Plug-In

Once your image is open, start the KODAK DIGITAL GEM Professional Plug-In. This slide shows how to start the plug-in with Photoshop CS.

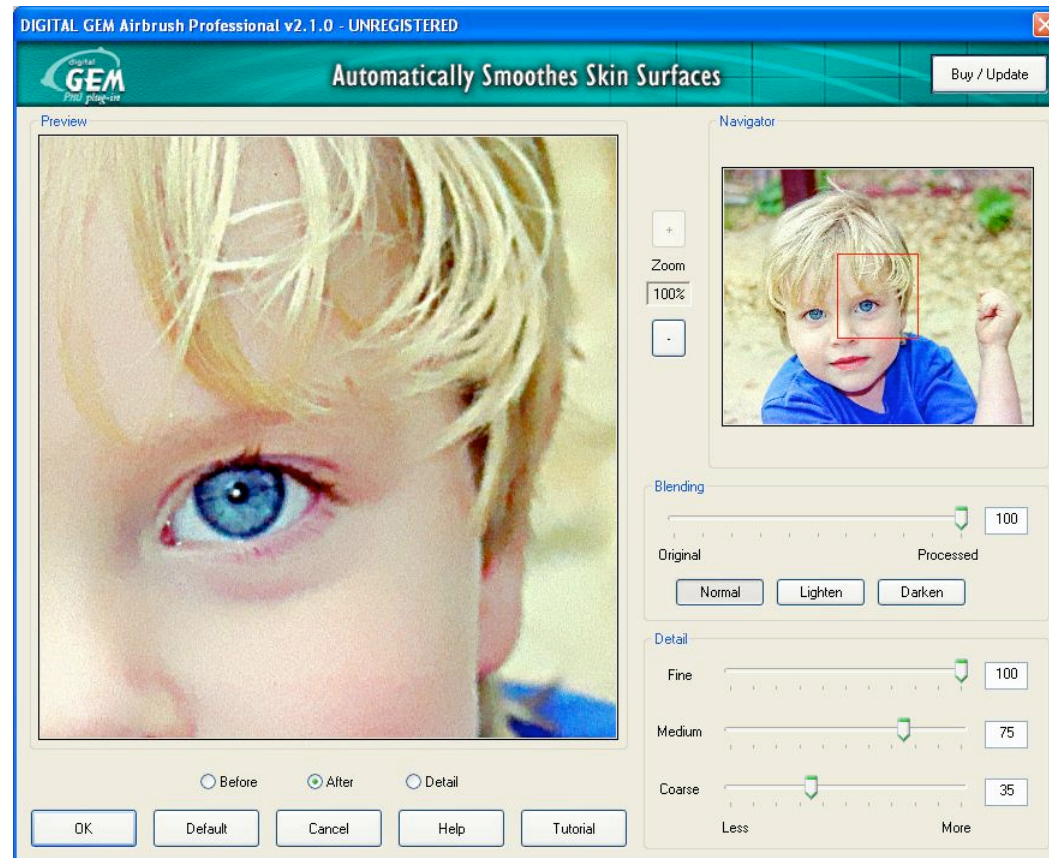
Go to the Filter menu and click on Filter and point to Kodak, then select the plug-in from the list of KODAK Plug-Ins that are available.



Using KODAK DIGITAL GEM Airbrush Professional Plug-In Interface

This is the Plug - In interface. The window opens with your image so that you can begin editing.

The **Buy/Update** button opens the Registration window. The next slide provides information about registration.



Registering the KODAK DIGITAL GEM Airbrush Professional Plug-In

With the Plug-In open, click on the **Buy/Update** button

Click on **Purchase Online** which takes you through a process to purchase the DIGITAL GEM Airbrush Professional Plug-In.

Once you have purchased you will be sent an email with your Serial Number. Be sure to save your Serial Number in case of a system crash or moving to a new system. You can print out your registration information at the time of purchase and file it away. Also keep the password you used to sign in.

Once your Plug-In is registered, you can check for updates (which are free) and upgrades by clicking on the **Check for Update** button.



The screenshot shows a dialog box titled "Enter Registration Information" with a blue header and a close button in the top right corner. The main content area is light gray and contains the following elements:

- A text prompt: "If you need to obtain a Serial Number, you may:" followed by a "Purchase Online" button.
- Instructions: "Enter the Serial Number you received via email from Kodak when you purchased:"
- A label "Serial Number:" followed by an empty text input field.
- At the bottom, three buttons: "Check for Update", "OK", and "Cancel".

KODAK DIGITAL GEM Airbrush Professional Plug-In Navigator and Preview

The smaller image in the Plug-In window is a “**Navigator**” window that includes a red box. The Navigator window displays the entire image to be processed

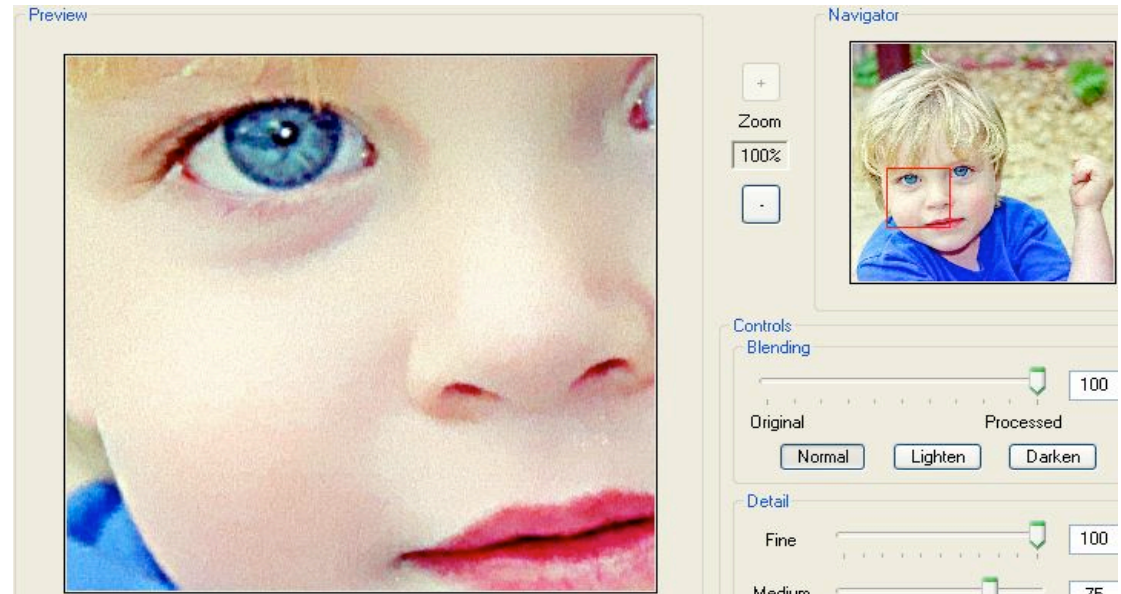
This area inside the red box is what is displayed in the larger “**Preview**” window
You can zoom in to 100% to see what effect the Plug-In is having on your image.

To move the red box, click and drag the mouse or by clicking a different area inside the Navigator window.

You can change the size of the navigator box using the Zoom In and Zoom Out buttons.

When you **Zoom In** (+) your image displayed in the Preview becomes more magnified

When you **Zoom Out** (-) your image displayed in the Preview becomes less magnified (showing the full image)



KODAK DIGITAL GEM Airbrush Professional Plug-In Blending Controls

Blending Controls



Blending - This slider determines how much of the Plug-In effects will be applied to the image. At zero percent it is the same as not running the Plug-In at all, at one hundred percent it is applying as much effect as possible.

Blending Modes - Blending choices control how the smoothed image is blended with the original



Normal mode softens the shadows and reduce the reflections use the mode Normal mode blends the images by averaging them, weighted according to the blending slider. For example, if the blending slider is set at 75%, the final image will be 75% of the smoothed image and 25% of the original added together. Normal mode is the best choice for images where the maximum amount of smoothing is needed.

Lighten mode blends the original and smoothed by choosing which is lighter, weighted by the blending slider. It lets light detail come through unaffected by the Plug-In. If you have darker details (as complexion problems) Lighten mode will smooth them out but lightened details like reflections are unaffected.

For example, if the blending slider is set at 75%, if the smoothed image is lighter than the original, the result will be 75% of the smoothed added to 25% of the original. Where the smoothed image is darker, the result is equal to the original. The lighten mode with the blending slider set at 100% is usually the best choice for portraits, because it preserves the highlights. The Darken mode works like the lighten mode, except the smoothed image is blended only in areas where it is darker than the original. This mode tends to be most useful for artistic effects, like smoothing a dark background. The blending modes and slider work very similarly to the layer blending modes and sliders in Photoshop.

If you have reflections (details) on a model's face and you want to remove them but leave the shadows. then use **Darken mode**, this allows you to leave shadows.

KODAK DIGITAL GEM Airbrush Professional Plug-In Detail Controls

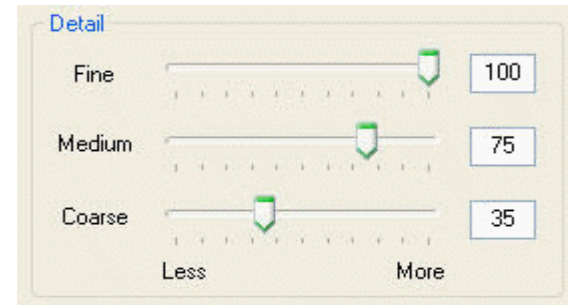
The Detail Controls are designed with sliders to control how sharp a particular type of detail will be present in the final image. Setting a slider to 100% adds the maximum amount of detail into the image causing the image to be less soft compared to the original. Setting a slider to 0% will add the minimum amount of detail into the image causing it to appear softer. Fine detail consists of very small features, and typically includes cloth weave, eyelashes or hair.

Coarse detail examples are mottle, blotchiness, stains on clothing, rumples in clothing and shadows.

Medium detail is in between Fine and Course. Also be aware that these examples can change depending on the composition.

Fine detail will be different depending on whether it is a close up portrait or a group photo. Use the "Detail" mode of the preview to see which features are being affected by a particular detail slider. This will allow you to visualize which parts of the image are Fine, Medium and Course and adjust them accordingly.

Detail Controls



KODAK DIGITAL GEM Airbrush Professional Plug-In Buttons

OK Button – This button closes the Plug-In window and process your image with the current settings of the controls. Once you have applied the Plug-In you can go to Edit>Fade to reduce the effect your image editor. This will give you the similar type of adjustment you get with the Blending Slider inside the Plug-In.

Default Button – This button sets the KODAK DIGITAL GEM Airbrush Professional Plug-In slider controls back to the default values.

Cancel Button – This button closes the Plug-In window without making any changes to your image.

Help Button – This button launches your default browser to display the help document.

Tutorial Button - This button launches your default browser to display the Tutorial document.

